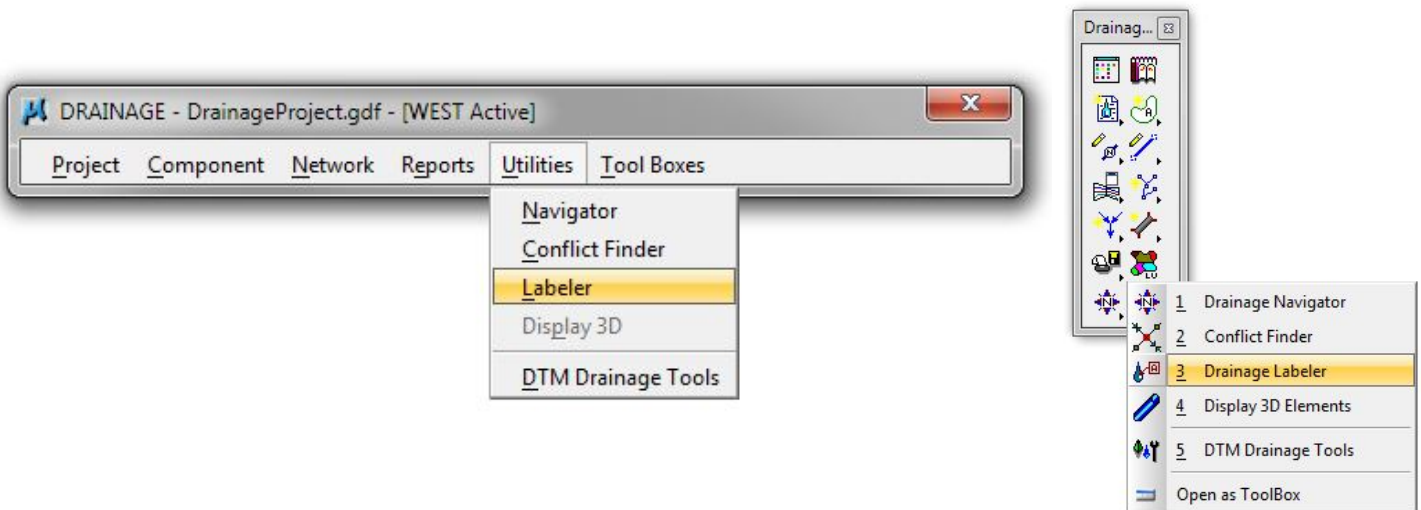


13. Storm Drainage Labeling

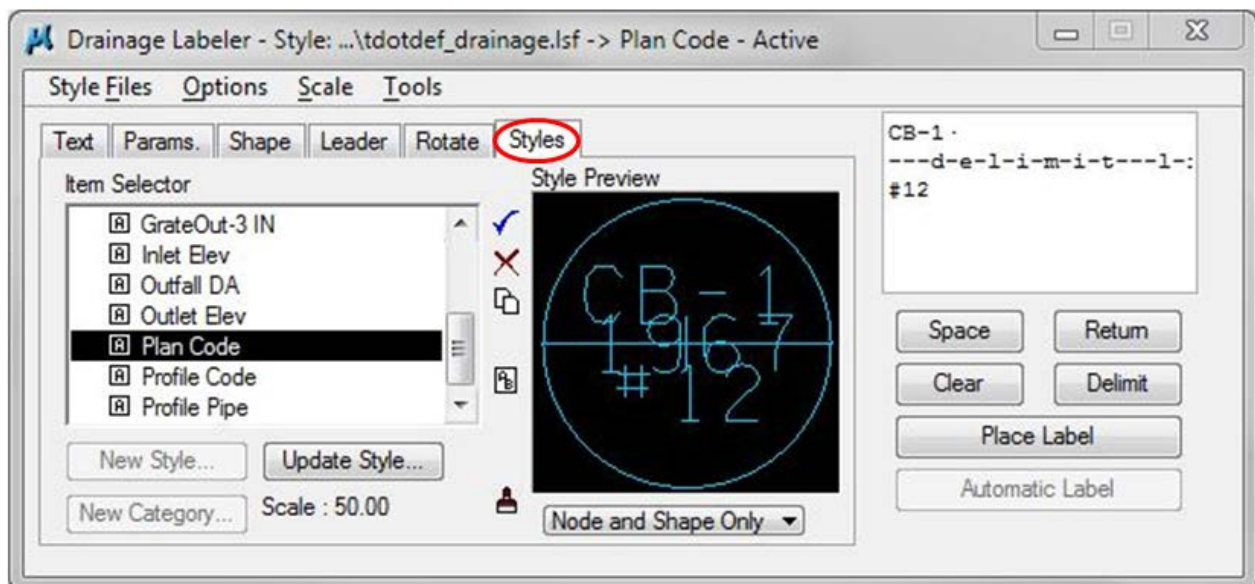
This exercise shows the user how to use standard labels by labeling the plan and profile views. The Labeler automates the composition and placement of many types of labels into the dgn file. This interactive tool permits the creation of very simple to very complex labels.

13.1 Plan View Labeling

- a) Open the Drainage Labeler by selecting **Utilities > Labeler** from the pull down menu or **Drainage Labeler** from the Drainage Toolbar.

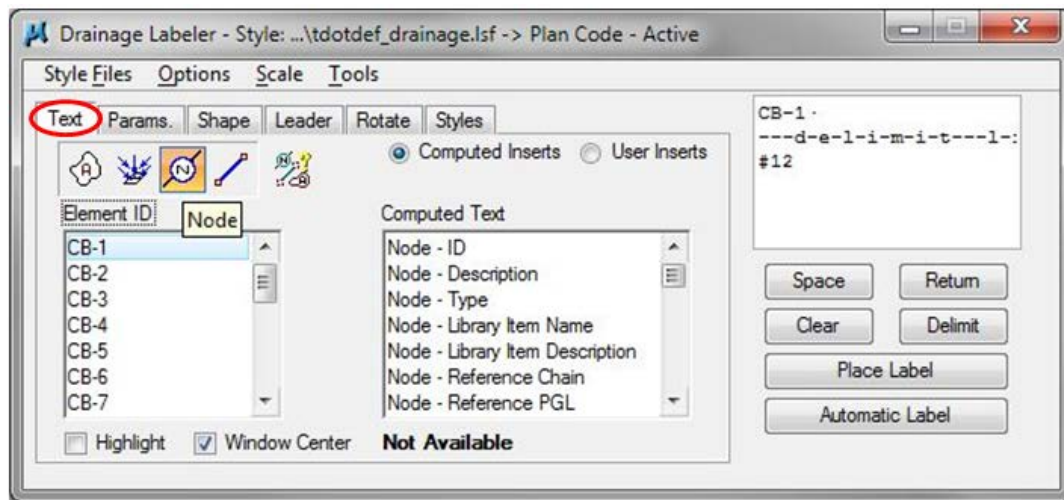


- b) Click on the **Style** tab, double click **Plan Code** under the Storm Drainage category and double click it to make it the active style.

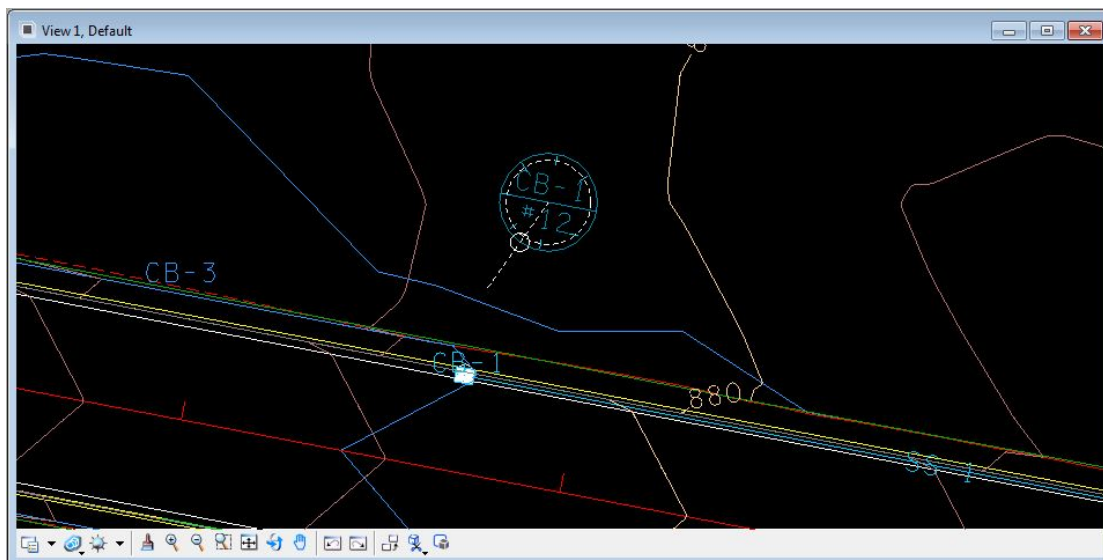


- c) Zoom in to CB-1 in plan view.

- d) Click on the **Text** tab, then click the **Nodes** icon and toggle **ON Window Center**.
- e) Click on **CB-1** from the node list. Label data is automatically set for that node and view centers at node location.



- f) Select from the pulldown menu: **Scale > Change Scale** and change to **50**.
- g) Click the **Place Label** button on the right of dialog to initiate placement of the label.
- h) Move the cursor to position the label and **data point** to place the label in the vicinity of CB-1. If the label text is not horizontal to the view or alignment, you may need to go to the **Rotate** tab to set the angle prior to placement.
- i) Move the cursor around and **data point** once again to locate the leader line point of beginning (i.e. where you want the leader to connect to the label).



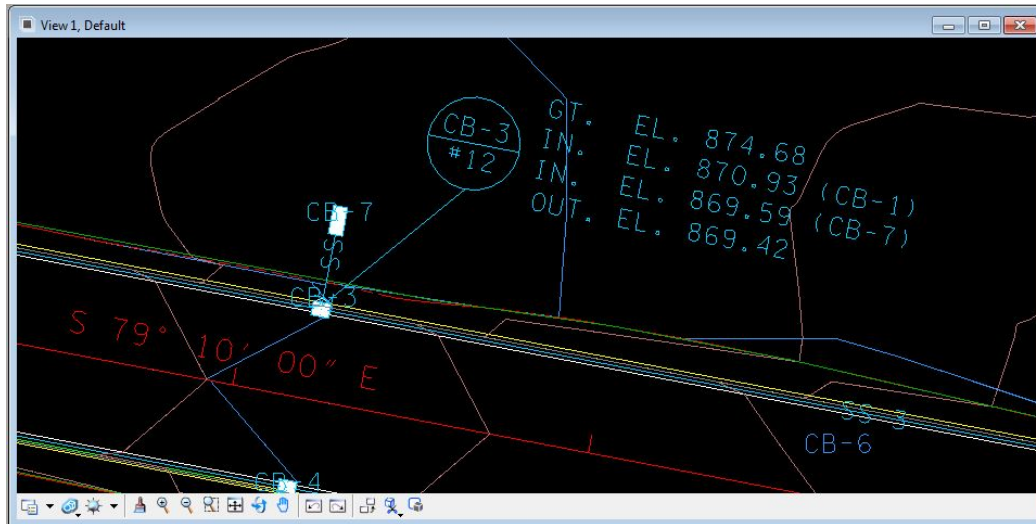
- j) Click the **Style** tab and set the active style to **GrateOut-0IN** with a double click.
- k) Click the **Text** tab and select **CB-1**. Click **Place Label** and data point next to the Code Label to position the text.

NOTE: For catch basins with one or more inlets, elevation labels will require an extra step to insert the inlet elevation(s).

Exercise 13

l) Place labels for CB-3 which includes 2 inlet pipes.

1. Click the **Style** tab and set the active style to **GrateOut-2IN** with a double click.
2. Click the **Text** tab and select **CB-3**. Click **Place Label** and data point next to the Code Label to position the text.
3. Click the **Style** tab and set the active style to **Inlet Elev** with a double click.
4. Click the **Text** tab and select **SS-1**. Click **Place Label** and data point below the **GT. EL.** Text placed in step b.
5. Select **SS-7**. Click **Place Label** and data point below the **IN. EL.** Text placed in step d.

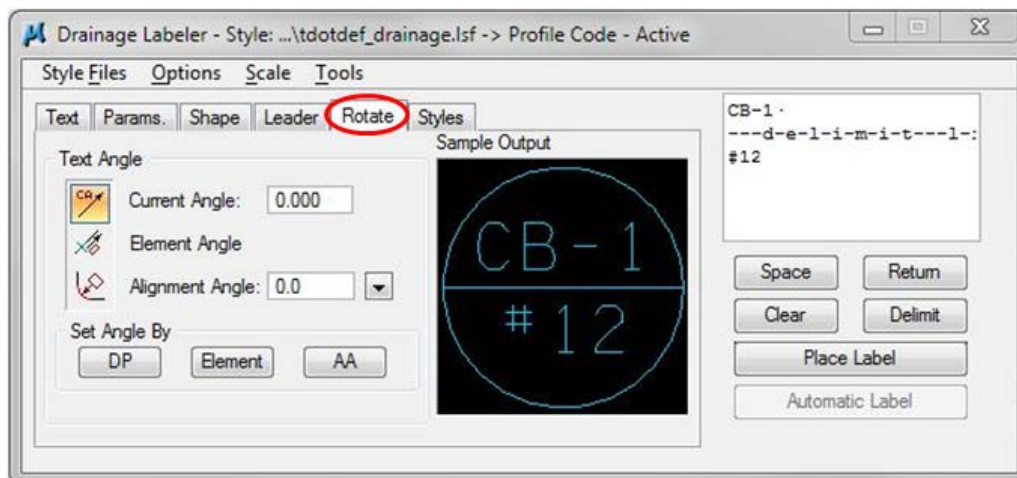


m) Place the remaining plan view Node labels.

13.2 Profile View Labeling

Normally the plan view displays most of the data for a catch basin, however, in some circumstance labels on the profile may be required.

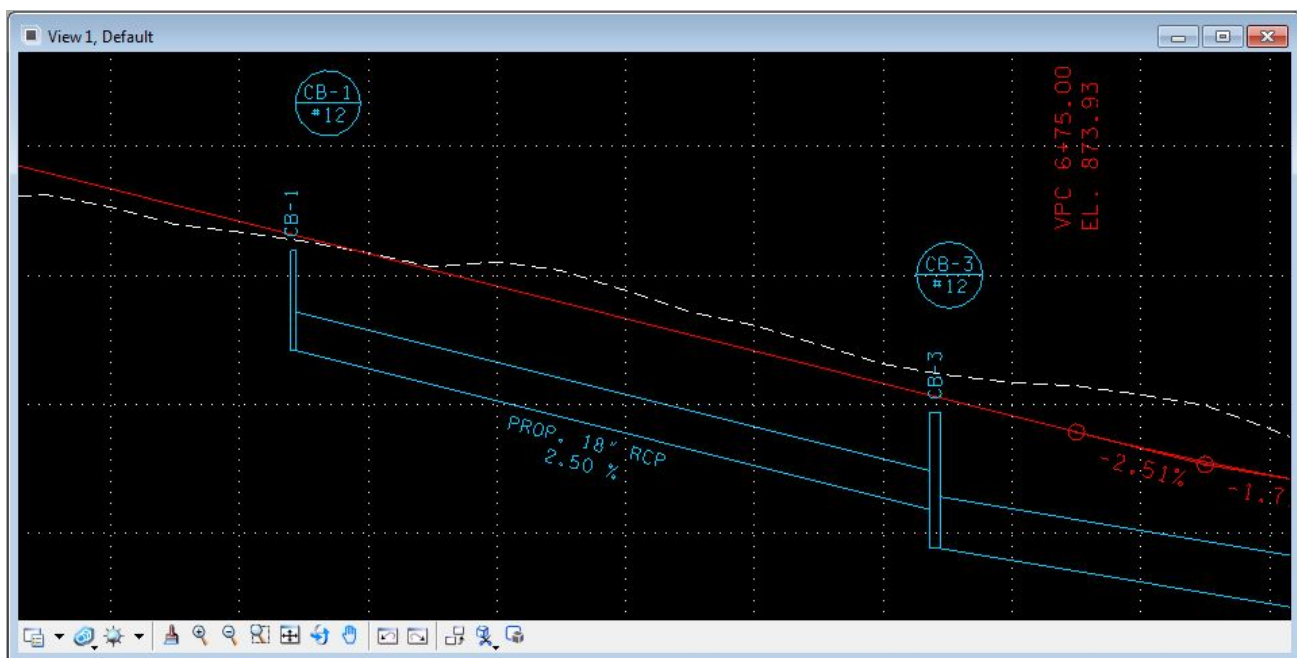
- a) Click on the **Styles** tab and double click on the style **Profile Code** to activate it.
- b) Click on the **Rotate** tab and click on **Current Angle** (If needed set to 0)



- c) Click on the **Text** tab and toggle OFF the **Window Center Box**. This option works with plan view only.
- d) Zoom in on the alignment profile view in the vicinity of CB-1.
- e) Click on CB-1 in the node list and then click **Place Label**.
- f) Locate in profile view and place the label.
- g) Repeat until all codes are placed for all nodes in the profile view.

Leader Line Optional Steps:

- Step 8.** Use MicroStation's **Match Element Attributes** and click on any code placement.
- Step 9.** Use MicroStation's **Place Line** to place leader lines from code placement to node.



NOTE:

Pipes are automatically annotated correctly for the plans when the preference file **TDOTStormSewerProfiles-Plan.ppf** is used for profile display control. When using label style **Profile pipe** to label proposed pipes on the profile ...

- 1) Select the link under the **Text** tab
- 2) Go to the **Rotate** tab and set to **Element Angle**
- 3) Click **Element** button in the *Set Angle By* portion of the dialog and identify the bottom of pipe on the profile to set label angle.
- 4) Data point to place label.